



- + Home
- + Knowledgebase
- + News
- + PMSO Articles
- + Security Solutions
- + About
- + Contact

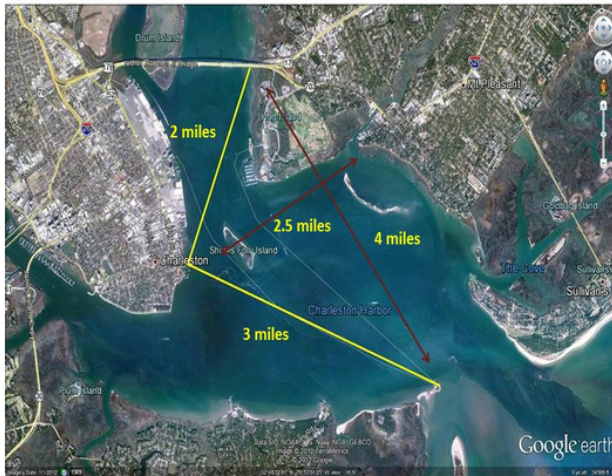
Welcome to Port and Maritime Security Online

This website provides information and links to resources of port and maritime security issues. The Port and Maritime Security Knowledgebase is intended to be resource for port and maritime security issues. PMSO also provides information on issues, companies and events concerning port and maritime security.

PMSO.net is best viewed in Google Chrome or Internet Explorer

+ Innovative Signal Analysis' WAVcam demonstrated at The Small Vessel Security Threats Conference

The Small Vessel Security Threats Conference in Charleston, SC delivered on its promise to "Build relationships and share information between stakeholders to secure our maritime domain." In addition to the information provided by the conference speakers, there were numerous exhibits and live demonstrations. The highlight of the live demonstrations came when conference attendees were able to watch vessels transit from the mouth of the harbor all the way to the Arthur Ravenel Jr Bridge on large format monitors displaying a live video feed from a single camera.



A single WAVcam® sensor covered the 90°, multi-square mile field of view with 80 million pixels. Using the CommandBridge® Regional Maritime Domain Awareness C2, the attendees could "see" a consolidated view of visual imagery and vessel tracks. This capability adds a whole new dimension to Regional Domain Awareness picture. According to the USCG, only .02% of the vessels within any given AOR are detected and tracked by radar and AIS. The WAVcam/CommandBridge integrated solution presents a unified view of radar tracks, AIS tracks and wide angle high definition imagery allowing the user to detect and track 100% of the vessels within an extremely large area. WAVcam sensors have an 80% probability of visually detecting a 20' vessel at a distance of 9.5 miles and detecting the thermal signature of a 20' vessel at a distance of 4 miles.

For more information, please contact Ray Hollida at ray.hollida@signal-analysis.com or 210-865-5824.

Please Visit:

- <http://www.signal-analysis.com/v1.2/index.php>
- http://www.signal-analysis.com/v1.2/prod_cam.php
- SVSTC
- <http://www.svstforum.com/>

- + Home
 - Company Profiles
 - Events
 - Ports
 - Shipping Lines
 - Links
-
- ISA WAVcam

